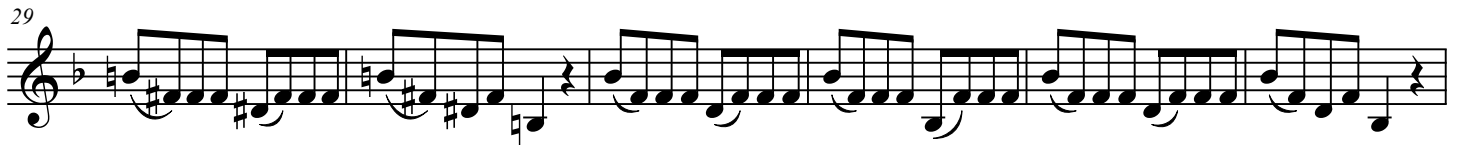
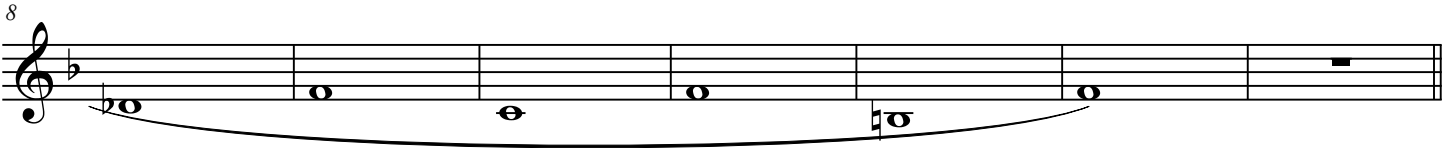


Warm-ups 2020

arr. E Ashford

A ♩ = 120



Warm-ups 2020

2

E

Musical staff for exercise E, measures 1-58. The staff is in treble clef with a key signature of one flat (B-flat). It features a sequence of eighth-note patterns, including a descending eighth-note scale, followed by a quarter rest and a final eighth note.

59

Musical staff for exercise E, measures 59-64. The staff continues the eighth-note patterns from the previous staff, ending with a quarter rest and a final eighth note.

F

Musical staff for exercise F, measures 65-72. The staff is in treble clef with a key signature of one flat. It features a sequence of eighth-note patterns, including a descending eighth-note scale, followed by a quarter rest and a final eighth note.

73

Musical staff for exercise F, measures 73-79. The staff continues the eighth-note patterns from the previous staff, ending with a quarter rest and a final eighth note.

80

Musical staff for exercise F, measures 80-89. The staff continues the eighth-note patterns from the previous staff, ending with a quarter rest and a final eighth note.

G

Musical staff for exercise G, measures 90-91. The staff is in treble clef with a key signature of one flat. It features a sequence of eighth-note patterns, including a descending eighth-note scale, followed by a quarter rest and a final eighth note.

92

Musical staff for exercise G, measures 92-97. The staff continues the eighth-note patterns from the previous staff, ending with a quarter rest and a final eighth note.

Chorale

Musical staff for Chorale, measures 98-107. The staff is in treble clef with a key signature of one flat. It features a sequence of quarter notes and half notes, including a descending quarter-note scale, followed by a quarter rest and a final quarter note.

108 Concert F

Musical staff for Concert F, measures 108-117. The staff is in treble clef with a key signature of one flat. It features a sequence of quarter notes and half notes, including a descending quarter-note scale, followed by a quarter rest and a final quarter note.

Concert Bb

Musical staff for Concert Bb, measures 118-127. The staff is in treble clef with a key signature of two flats (B-flat and E-flat). It features a sequence of quarter notes and half notes, including a descending quarter-note scale, followed by a quarter rest and a final quarter note.

114 Concert Eb

Concert Ab



122 Chromatic Scale

