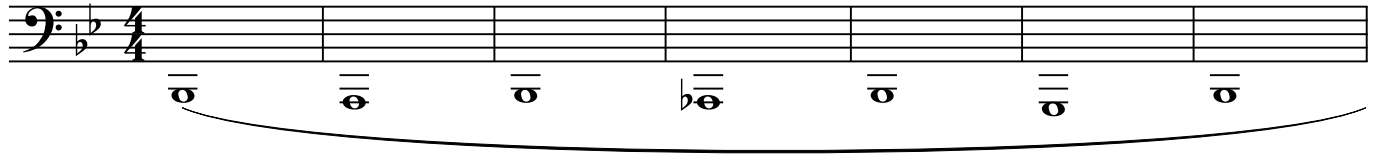


Warm-ups 2020

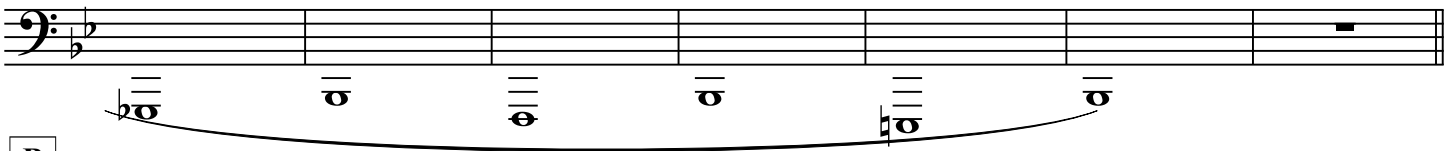
arr. E Ashford

A

♩ = 120



8



B



C



29

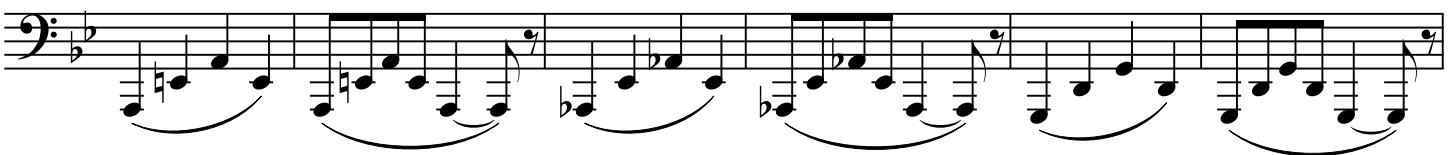


D

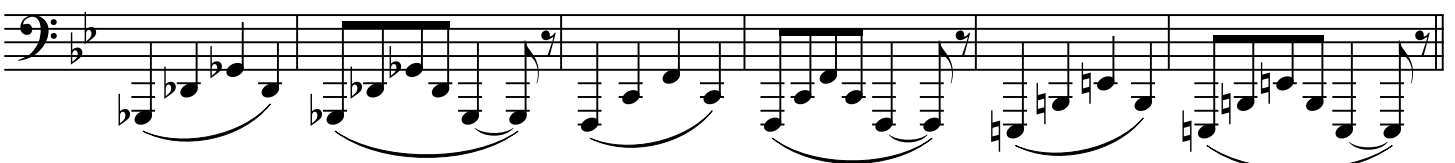
35



41



47



2

E

Musical staff for exercise E, measures 1-58. The staff is in bass clef with a key signature of one flat (B-flat). It features a continuous eighth-note pattern that descends stepwise from G2 to E1, with some phrasing slurs and a repeat sign at the end.

59

Musical staff for exercise E, measures 59-64. Continuation of the eighth-note pattern from the previous staff, ending with a repeat sign.

F

65

Musical staff for exercise F, measures 65-72. Continuation of the eighth-note pattern, featuring phrasing slurs and a repeat sign at the end.

73

Musical staff for exercise F, measures 73-79. Continuation of the eighth-note pattern with phrasing slurs and a repeat sign at the end.

80

Musical staff for exercise F, measures 80-89. Continuation of the eighth-note pattern with phrasing slurs and a repeat sign at the end.

G

Musical staff for exercise G, measures 90-91. Continuation of the eighth-note pattern with phrasing slurs and a repeat sign at the end.

92

Musical staff for exercise G, measures 92-97. Continuation of the eighth-note pattern with phrasing slurs and a repeat sign at the end.

Chorale

98

Musical staff for Chorale, measures 98-105. A slower, more melodic line in bass clef with a key signature of one flat, featuring various note values and rests.

106 Concert F

Concert Bb

Musical staff for Concert F and Concert Bb, measures 106-112. Continuation of the eighth-note pattern, with a key signature change from one flat to two flats (B-flat and E-flat) indicated by a double bar line and a new key signature.

114 Concert Eb

Concert Ab

Musical notation for Exercise 114, consisting of two staves. The first staff is in the bass clef with a key signature of two flats (E-flat major/C minor) and a 3/4 time signature. It contains a sequence of eighth notes: C2, C2, C2, D2, D2, E-flat2, E-flat2, F2, F2, G2, G2, A2, A2, B2, B2, C3. The second staff is also in the bass clef with a key signature of two flats and a 3/4 time signature. It contains a sequence of eighth notes: C2, C2, C2, D2, D2, E-flat2, E-flat2, F2, F2, G2, G2, A2, A2, B2, B2, C3. Both staves end with a double bar line.

122 Chromatic Scale

Musical notation for Exercise 122, a chromatic scale in the bass clef with a key signature of two flats and a 3/4 time signature. The scale consists of 12 eighth notes: C2, C-sharp2, C2, C-flat2, C2, C2, C-sharp2, C2, C-flat2, C2, C2, C-sharp2, C2, C-flat2, C2. The scale ends with a double bar line.